

# RESISTOR FLANGE MOUNT 250 WATT



DATA SHEET

PART SERIES: 31-1059-X-X

SHEET 1 OF 2  
Dwg 31-1059

EN 13-3528  
Revision-

## FEATURES

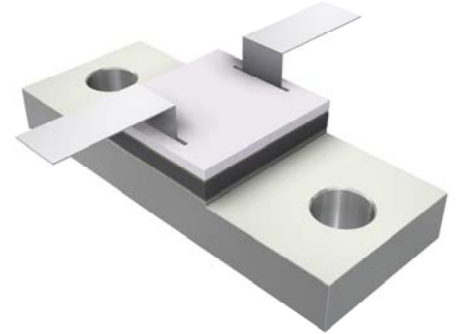
Tab Launch  
High Power  
Integrated Heat Sink  
Low Capacitance  
Easy Installation  
Wide Resistance Range

## APPLICATIONS

Broadcast  
High Power Filters  
High Power Amplifiers  
Isolators  
Military  
Instrumentation

## GENERAL DESCRIPTION

EMC Technology offers the widest selection of flange mount resistors worldwide. High power flange components offer excellent performance and the convenience of bolt on installation.



## ORDERING INFORMATION

### Part Identifier:

31-1059-X-X

└─┬─ Tolerance  
└──┬─ Resistance Value

## SPECIFICATIONS

### 1.0 ELECTRICAL

Resistance Range: 5 - 150 OHMS  
Resistance Tolerance:  $\pm 5\%$  standard 1% and 2% available  
Input Power CW: 250 watts @ 100°C heat sink, derated linearly to zero power at 150°C  
Peak Power: 2500 watts (based on 10us pulse width and 1% duty cycle)

### 2.0 ENVIRONMENTAL

Operating Temperature: -55°C to +150°C  
Non-operating Temperature: -65°C to +150°C  
Temperature Coefficient:  $\pm 200$  PPM / °C max

### 3.0 MARKING

Unit Marking: Logo and Part Number; legibility and permanency per MIL-STD-130

### 4.0 QUALITY ASSURANCE

Visual and Mechanical Inspection: Per 824W107  
DC Resistance Check: 100% DC Resistance Check  
Data Retention: Standard

### 5.0 PACKAGING

Standard Packaging: Tray

# RESISTOR FLANGE MOUNT 250 WATT



DATA SHEET

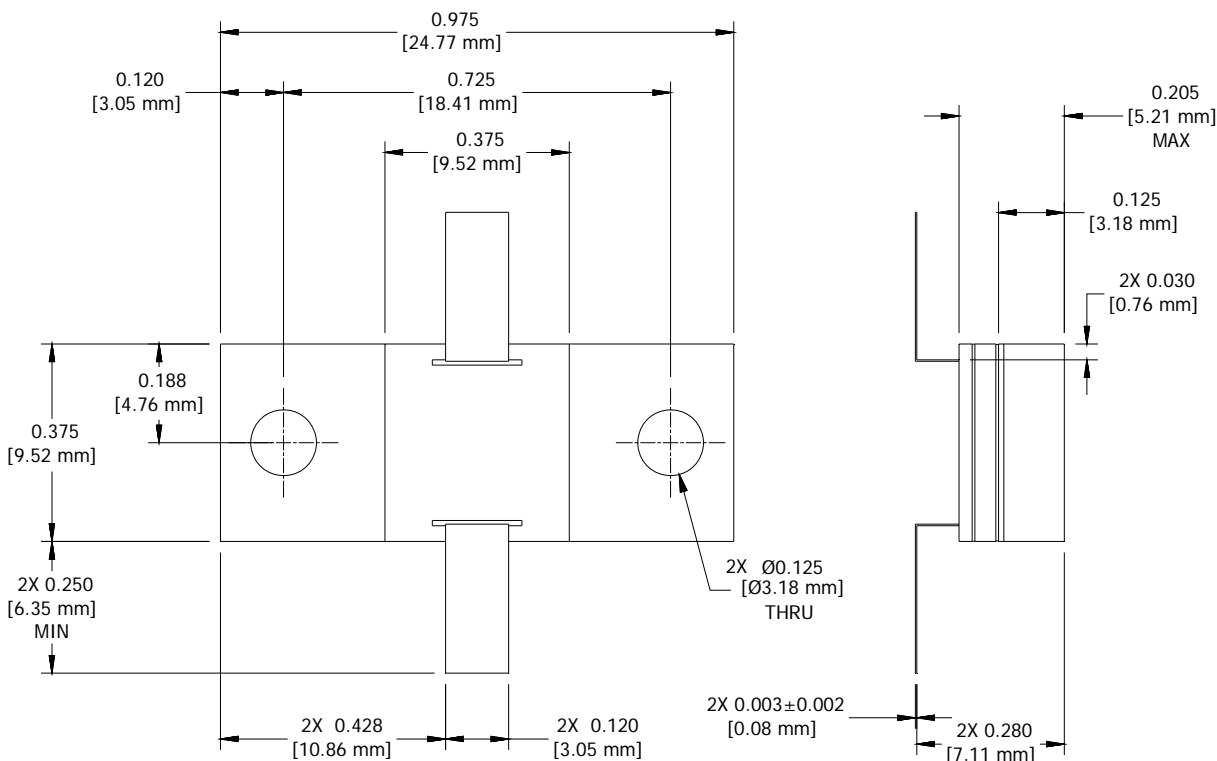
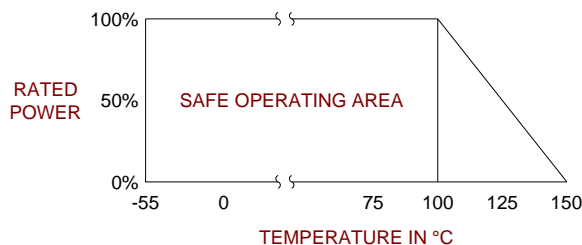
PART SERIES: 31-1059-X-X

SHEET 2 OF 2  
Dwg 31-1059

EN 13-3528  
Revision-

## 6.0 MECHANICAL

Substrate Material:	Beryllium Oxide
Resistive Film:	Nichrome
Cover Material:	Alumina Oxide
Tab Material:	Beryllium Copper
Tab Finish:	Tin/Lead
Flange Material:	Copper
Flange Finish:	Nickel
Metric Dimensions:	Provided for reference only



Unless Otherwise Specified: TOLERANCE: X.XX = ± 0.02 X.XXX = ± 0.010