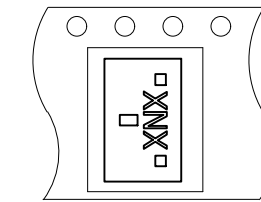


TAPE P/N	P0	P1	W1	REEL DIAMETER
412071B	4 mm	4 mm	8 mm	7"

STANDARD ORIENTATION SHOWN

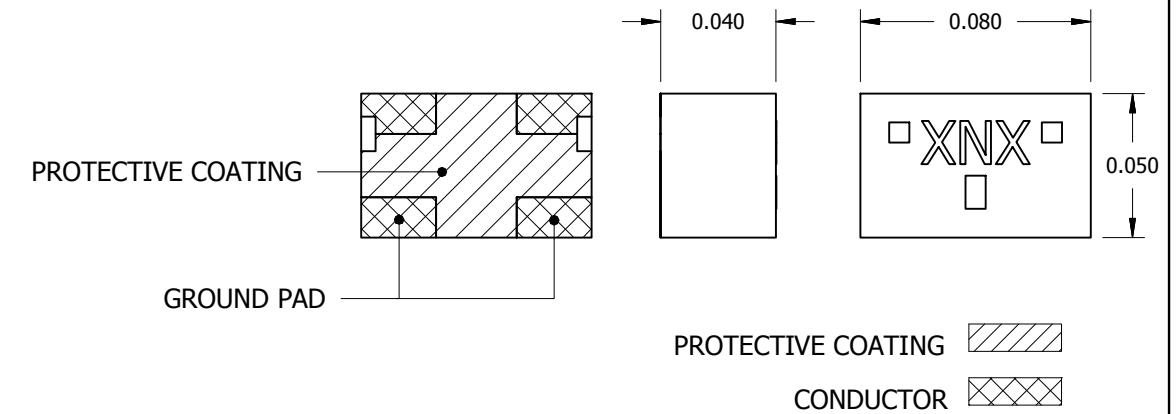
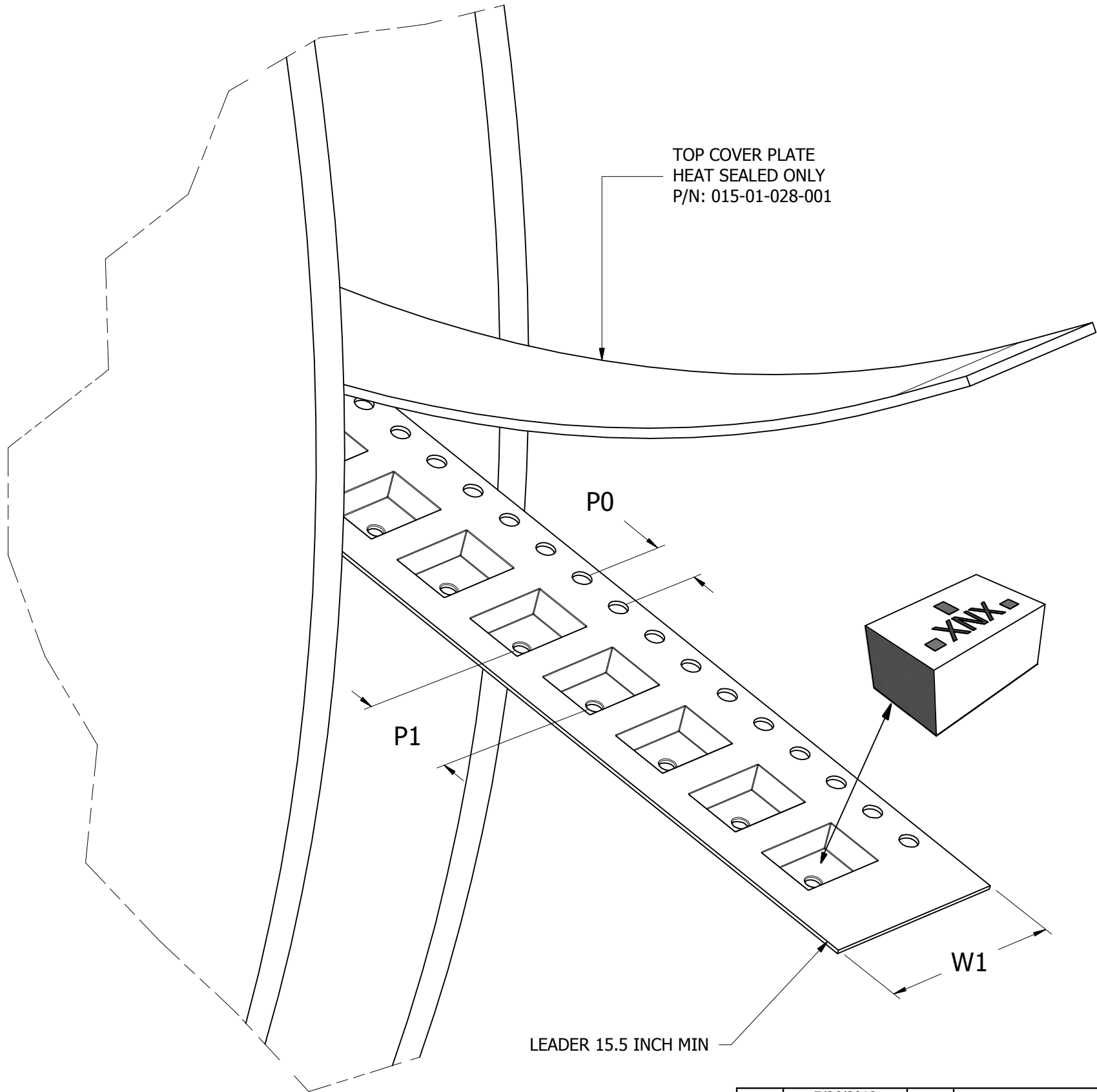
- CONFORMS TO EIA-481-D, EXCEPT ORIENTATION
- PROTECTIVE COATING: DOWN
- REEL: 7 INCHES (7)

ORDERING CODE: A33
REFERENCE ORIENTATION:

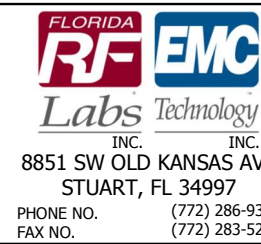


1	2
3	4

TOP COVER PLATE
HEAT SEALED ONLY
P/N: 015-01-028-001



*STANDARD QUANTITY: 1000 PARTS/REEL ON 7" REEL (P/N 015-01-027-008)
QUANTITIES GREATER THAN 1000 PARTS REQUIRE 13" REEL (P/N 015-01-027-009)



UNLESS OTHERWISE SPECIFIED

- DO NOT SCALE DRAWING
- DIMENSIONS ARE IN INCHES
- DIMENSIONS ARE AFTER PLATING
- CORNERS, EDGES AND FILLETS: R 0.005 MAX
- SURFACE ROUGHNESS: 63
- REMOVE ALL BURRS

TOLERANCES

X.XX	± 0.02	
X.XXX	± 0.010 FRACTIONS	± 1/16
X.XXXX	± 0.0005 ANGLES	± 5°

TITLE

TAPE AND REEL DETAIL
0.091 X 0.061 X 0.051
CAVITY SIZE

DRAWING NUMBER

PACK CODE A33

REV	DATE	BY	EN NUMBER
B	7/26/2018	JNK	18-0524
A	12/20/2012	TS	12-2227
-	5/26/2012	TS	12-0532
REVISION			

THESE DRAWINGS AND SPECIFICATIONS ARE THE PROPERTIES OF EMC TECHNOLOGY AND FLORIDA RF LABS AND SHALL NOT BE DUPLICATED OR USED AS BASIS FOR THE MANUFACTURE OR SALES OF PARTS OR DEVICES WITHOUT PERMISSION.		REFERENCE / MACOLA NO. / PART NO.	
MATERIAL	FINISH	EMC CAGE CODE	RF CAGE CODE
		24602	2Y194
		PLOT SCALE	SHEET
		-	1 OF 1