

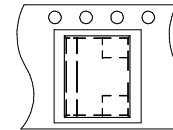
TAPE P/N	P0	P1	W1	REEL DIAMETER
412091B	4 mm	4 mm	8 mm	SEE NOTES

STANDARD ORIENTATION SHOWN

- CONFORMS TO EIA-481-D, EXCEPT ORIENTATION
- TERMINALS: DOWN
- REEL: 7 INCHES (7)

ORDERING CODE: A2

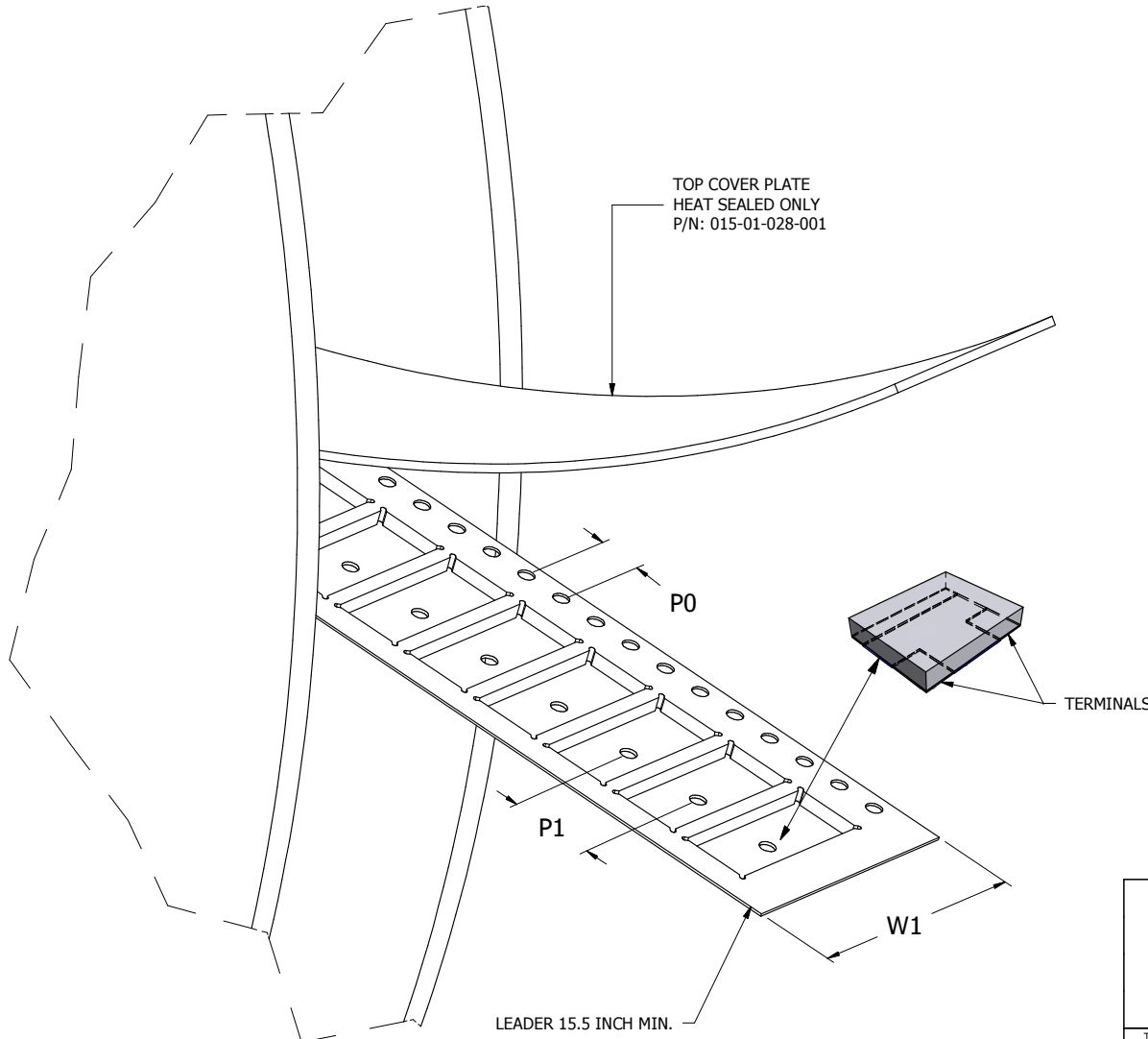
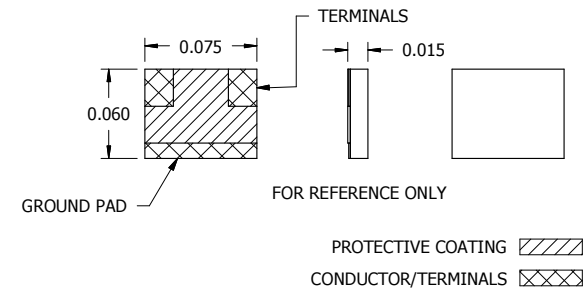
REFERENCE ORIENTATION:



1	2
3	4

NOTE: DOTTED LINE REPRESENTS UNDERSIDE VIEW OF CHIP FOR ORIENTATION PURPOSES ONLY

TOP COVER PLATE
HEAT SEALED ONLY
P/N: 015-01-028-001



*STANDARD QUANTITY: 1000 PARTS/REEL ON 7" REEL (P/N 015-01-027-008)
QUANTITIES GREATER THAN 1000 PARTS REQUIRE 13" REEL (P/N 015-01-027-009)

 INC. INC. 8851 SW OLD KANSAS AVE STUART, FL 34997 PHONE NO. (772) 286-9390 FAX NO. (772) 283-5286	UNLESS OTHERWISE SPECIFIED	TITLE
	1. DO NOT SCALE DRAWING 2. DIMENSIONS ARE IN INCHES 3. DIMENSIONS ARE AFTER PLATING 4. CORNERS, EDGES AND FILLETS: R 0.005 MAX 5. SURFACE ROUGHNESS: 63 6. REMOVE ALL BURRS	ATTENUATOR TAPE AND REEL DETAIL 0.087 X 0.072 X 0.024 CAVITY SIZE
	TOLERANCES X.XX ± 0.02 X.XXX ± 0.010 FRACTIONS ± 1/16 X.XXXX ± 0.0005 ANGLES ± 5°	DRAWING NUMBER
	THESE DRAWINGS AND SPECIFICATIONS ARE THE PROPERTIES OF EMC TECHNOLOGY AND FLORIDA RF LABS AND SHALL NOT BE DUPLICATED OR USED AS BASIS FOR THE MANUFACTURE OR SALES OF PARTS OR DEVICES WITHOUT PERMISSION.	PACK CODE A2
REFERENCE / MACOLA NO. / PART NO.	MATERIAL	EMC CAGE CODE
	FINISH	RF CAGE CODE
		PLOT SCALE
		SHEET
		24602
		2Y194
		-
		1 OF 1

REV	DATE	BY	EN NUMBER
B	12/18/12	TS	12-2227
A	9/20/12	TS	12-1612
-	04/28/12	SP	12-0417
REVISION			